

CHASE TOWER

MONTGOMERY COUNTY



JBG SMITH



LOCATION

Montgomery County
4466 – 4471 Willard Avenue
Chevy Chase, MD 20815

SPACE AVAILABLE

2,000 sq. ft (Subdivisible)

GROSS LEASABLE AREA

33,960 sq. ft.

PROPERTY OVERVIEW

Chase Tower retail is a 251,000 square foot commercial building in Chevy Chase, Maryland, just steps away from the Friendship Heights Metro Station. The project is comprised of a 12-story Class A office building, a two-story retail building, and a community park.

CURRENT RETAILERS

Chipotle, Roti, Potbelly Sandwich Shop, Mei Wah, Georgetown Valet, My Eye Dr.

DEMOGRAPHICS

| RADIUS | HH INCOME | POPULATION |
|---------|-----------|------------|
| 1 mile: | \$139,904 | 27,303 |
| 3 mile: | \$136,131 | 166,008 |
| 5 mile: | \$105,245 | 589,334 |

TRAFFIC COUNT

8,740 vehicles daily on Willard Avenue

CONTACT

Bob Schwenger | 301.657.7331
bschwenger@jbgsmith.com

Ben Brehne | 240.333.7713
bbrehne@jbgsmith.com

CHASE TOWER / GALLERY



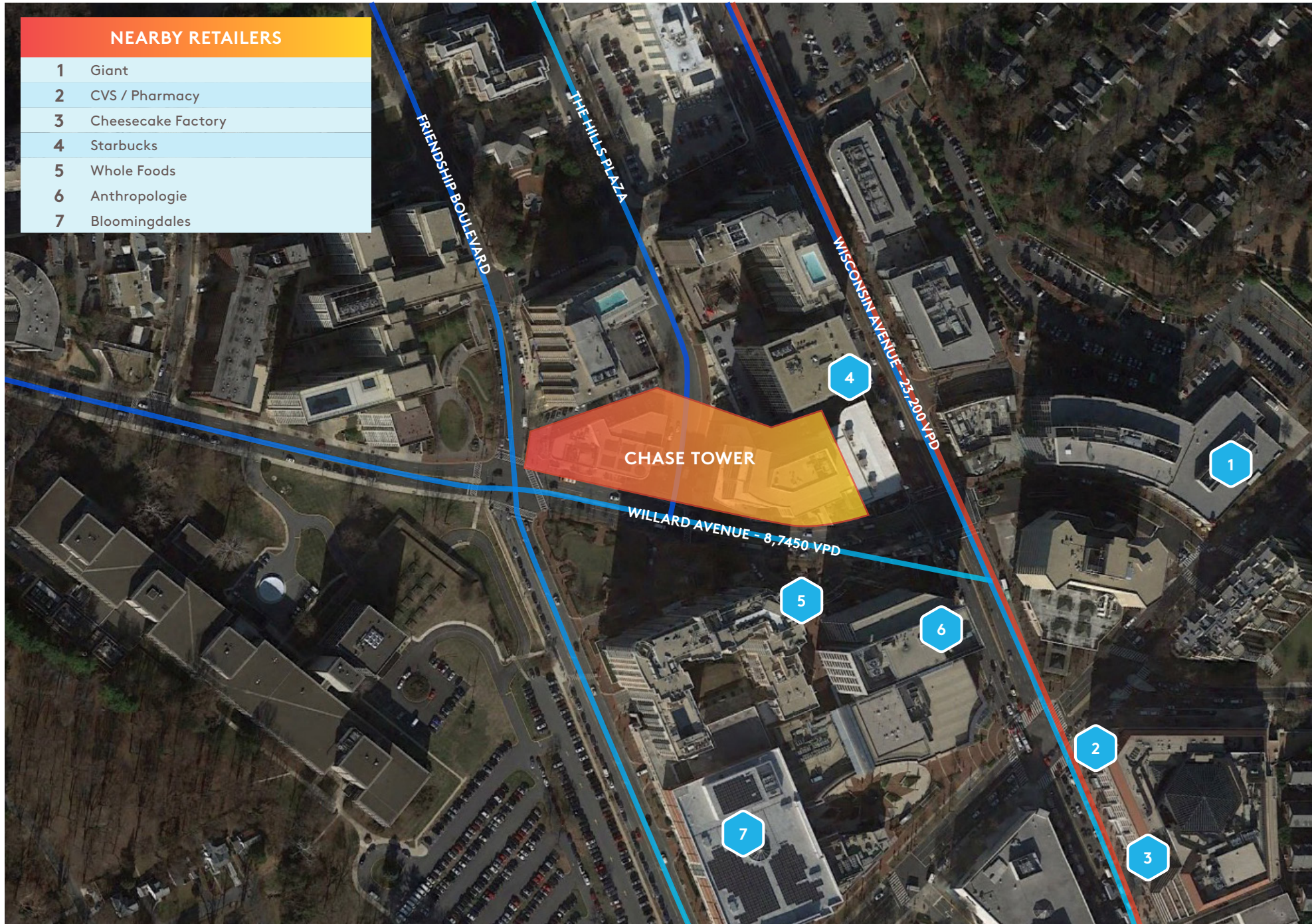


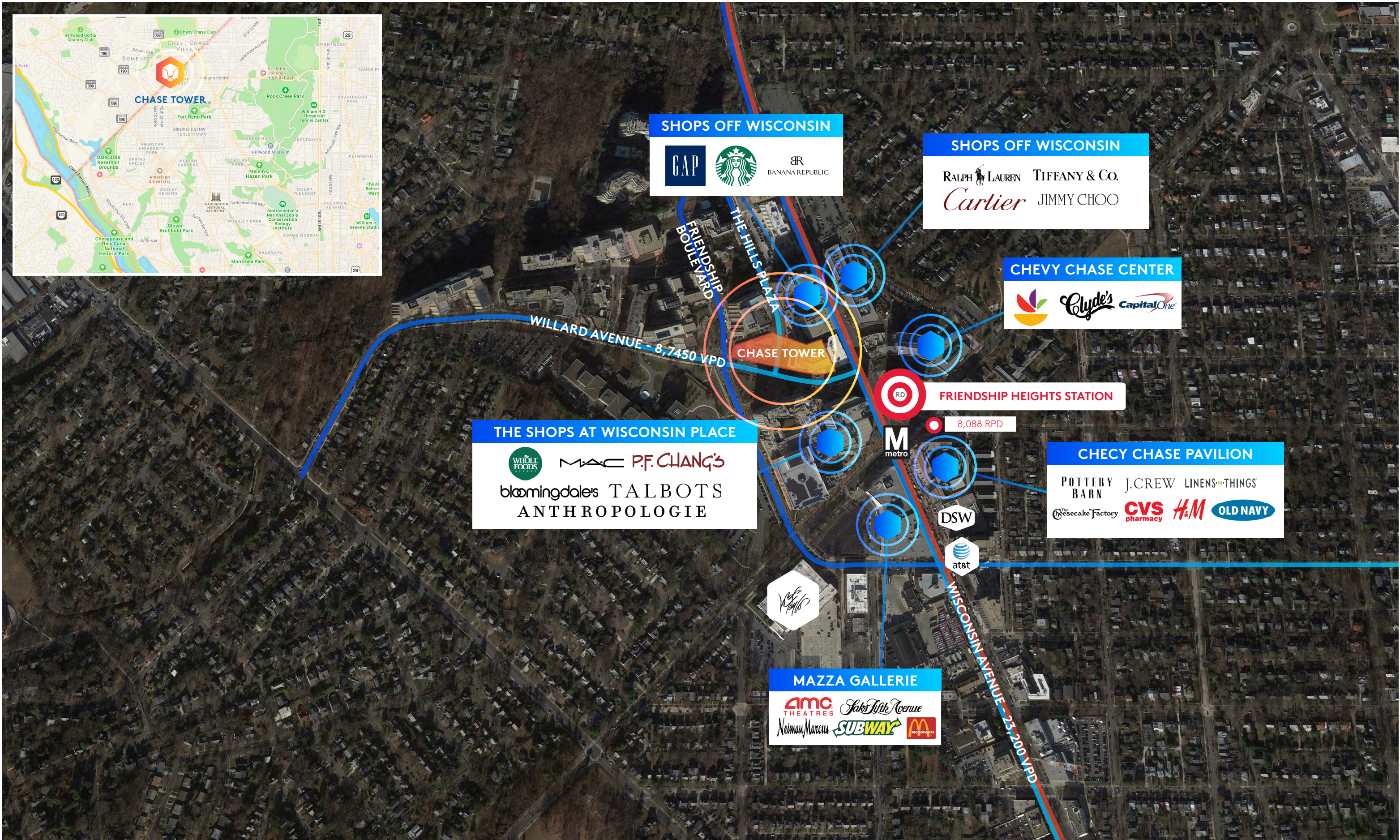
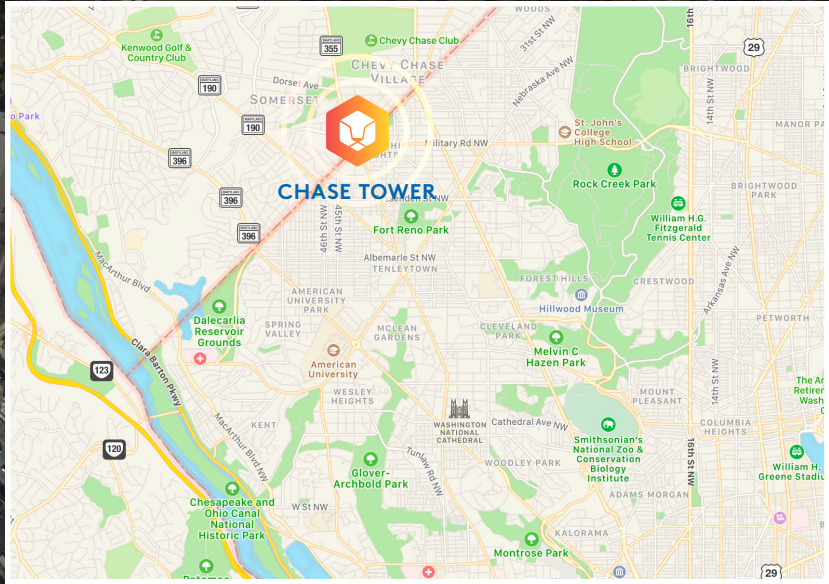
| SHOPPING CENTER RETAILERS | | | | | |
|---------------------------|------------------|--------|---|-----------------------------|----------|
| 1 | Chipotle | N/A SF | 4 | Roti | 2,200 SF |
| 2 | My Eye Dr. | N/A SF | 5 | Craft Beer & Wine | 1,600 SF |
| 3 | Georgetown Valet | N/A SF | 6 | Potbelly Sandwich Shop | 3,008 SF |
| | | | 7 | Forbright Bank | 3,258 SF |
| | | | 8 | Cheff Geoff's Lia's Italian | N/A SF |
| | | | 9 | Available | 2,000 SF |

CHASE TOWER / AERIAL

NEARBY RETAILERS

- | | |
|---|--------------------|
| 1 | Giant |
| 2 | CVS / Pharmacy |
| 3 | Cheesecake Factory |
| 4 | Starbucks |
| 5 | Whole Foods |
| 6 | Anthropologie |
| 7 | Bloomingdales |





SHOPS OFF WISCONSIN



SHOPS OFF WISCONSIN



CHEVY CHASE CENTER



THE SHOPS AT WISCONSIN PLACE



FRIENDSHIP HEIGHTS STATION

8,088 RPD

CHEVY CHASE PAVILION



MAZZA GALLERIE

